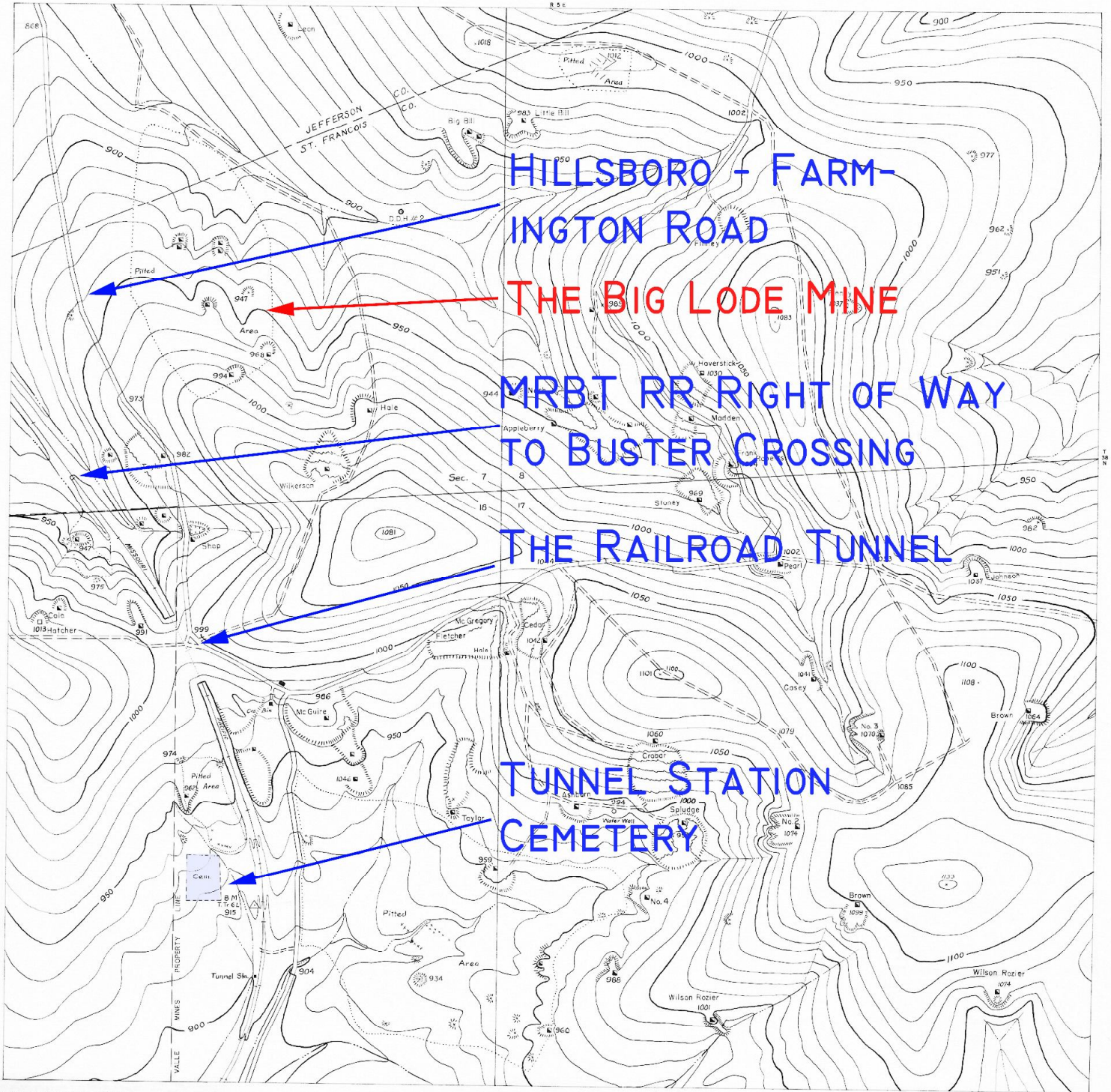


MISSOURI GEOLOGICAL SURVEY AND WATER RESOURCES.
EDWARD L. CLARK, DIRECTOR AND STATE GEOLOGIST

TOPOGRAPHIC MAP SHOWING THE PORTION
OF
THE VALLE MINES PROPERTY
NEAR TUNNEL STATION



Topography & Drafting by: W.D. Phillips
Surveyed in March 1946

LEGEND

- Abandoned shaft
- Operating shaft
- x Prospect pit
- D.D.H. Diamond Drill Hole
- Mine dump
- ⊗ Open pit
- ⋯ Limits of Pitted Area

SCALE
0 200 400 FEET

Contour Interval 10 feet
Datum is mean sea level

Approximate mean declination
1930

Case 322-D-1-D